

Drackett Tower: *An Ohio State University Residence of Distinction*

161 Curl Drive
Columbus, Ohio 43210

Summer phone: 614-292-3930

You will be assigned to a *private* room unless you request a roommate.

This building offers the following features:

Public and closed study spaces on both the first floor and basement levels of the building

Recreation room, with a pool table and fooseball table and safe storage for bicycles in the bike room located in the basement

Air Conditioning

Bike Room

Cable

Coed by Same-sex Room/Suite

Handicap Access

Kitchen Facilities

Laundry Facilities (in complex)

Microwave/Refrigerator

Wireless internet with OSU login

Bedroom Available Floor Space- Approximately 14'2"

L x 9'2" W

Bathroom Available Floor Space- Approximately 5'7"

L x 7'8" W

Living Room Available Floor Space- Approximately

14'2" L x 9'4" W

Ceiling Height-7'11"

Window Height (Off Of The Ground)-2'10"

Bed Frame- 36" W x 83" L

13" Height Off Of The Ground

Built-In Wardrobe- 80" H x 37" W x 19" D

Shelf 8" H x 36" W x 19" D

Built-In Dresser- 80" H x 37" W x 19" D

4- Lockable Drawers 5" H x 36" W x 17.5" D

4- Drawers 7" H x 36" W x 17.5" D

4- Shelves 8" H x 17" W x 12" D

Lounge Chair- 27" H x 27" W x 27" D

Refrigerator- 44.5" H x 19.5" W x 19.5" D
2.9 Cubic Feet

Love Seat- 28" H x 48" W x 28" D

Built-In Desk- 75" L x 24" W
30" Height Off Of The Ground

Bookcases- 82" H x 24" W x 11" D

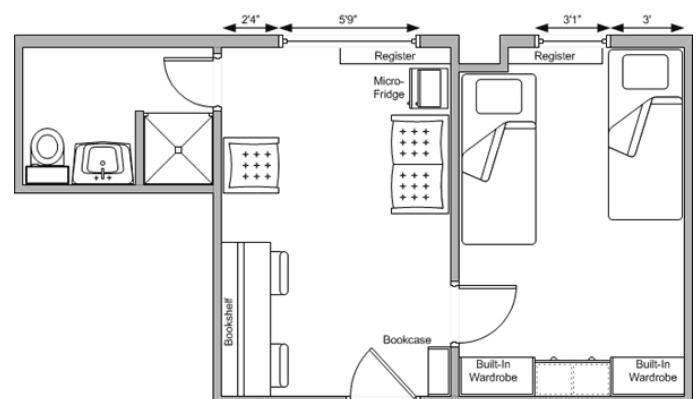
Desk All mattresses are 36" x 80" and are designed to fit twin, extra long bed sheets. Sheets will be provided.

All furniture is free-standing and moveable unless otherwise noted.

Window coverings are provided in every residence hall room.

Each refrigerator/microwave unit contains ice cube trays.

You will need to provide your own Towels.



Sample floor plan—you actual room might vary